



FIDDLEHEAD MINING CORP. ANNOUNCES

Signs Agreement with EarthEX Geophysical Solutions Inc (MB)



******* FOR IMMEDIATE RELEASE *******

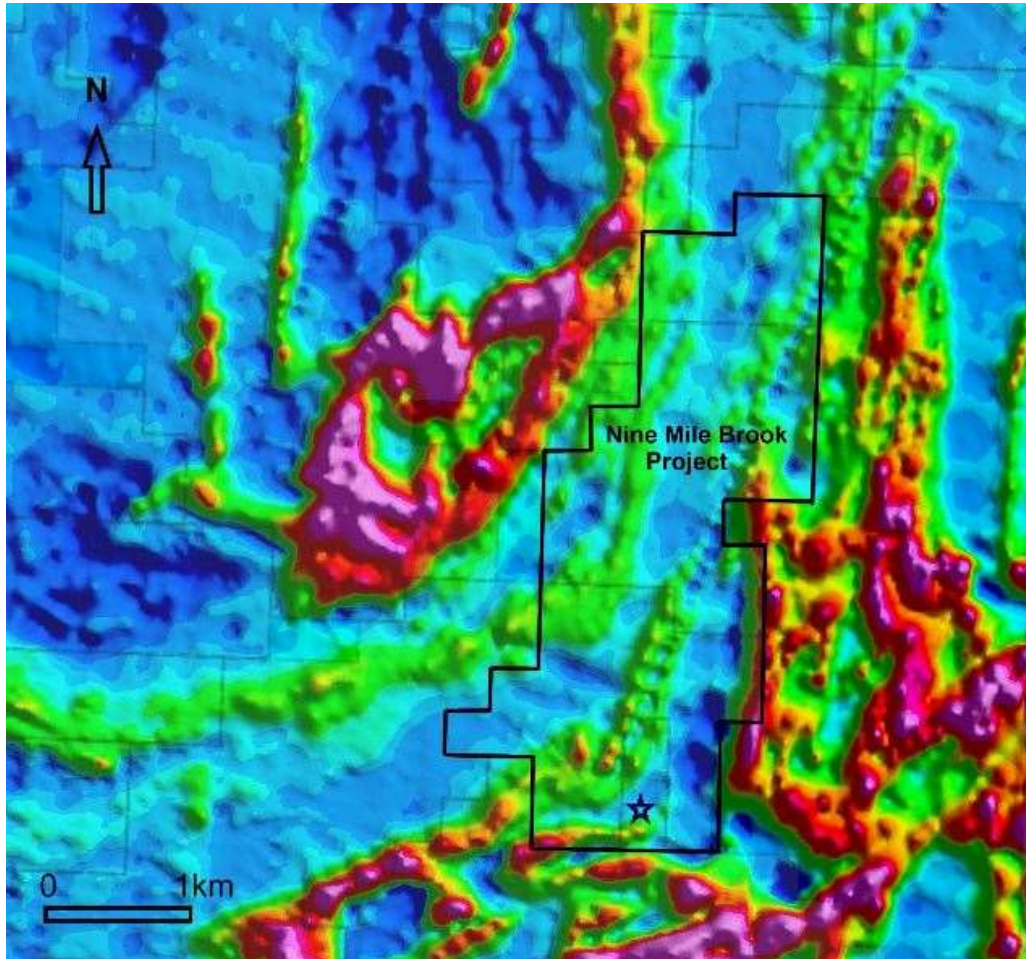
BATHURST, New Brunswick, Canada – (Monday February 8th, 2021)

Fiddlehead Mining Corp. ("FMC" or the "Company") is pleased to announce its new partnership with EarthEx Geophysical Solutions Inc. (EarthEx), a geophysical consulting firm based in Selkirk, Manitoba, Canada. EarthEx specializes in the analysis, interpretation, 3D modelling and acquisition of data from Electromagnetic (EM), Induced Polarization (IP), Magnetic, VTEM and Gravity surveys. Fiddlehead Mining has signed EarthEX for complete GIS re-processing and GeoPhysical Inversion 3D Analysis, to be initiated immediately on the 9 Mile Brook Project. (Figure 1).

EarthEx has previously demonstrated their ability to identify new targets within the Bathurst Mining Camp, including definition of a new target trend, "Middle River Gold deposit & the confirmation of the Bathurst Horizon VMS Extension. This partnership will not only confirm & enhance our present targets at Nine Mile Brook, but will also increase our exploration opportunities and success rate as new targets and potential additional VMS Lenses are identified.

Geophysical prospecting, data integration and analysis by EarthEx will incorporate all geological, geochemical and geophysical elements into a project model with prioritized target zones, resulting in "Target Definition" for Hard Rock Minerals. The final product will characterize specific targets within the larger trends, all prioritized with recommendations for additional work if required prior to drilling. Ideally, collar coordinates for drilling will be provided.

“We are pleased to have EarthEX join our Technical Team. Utilizing new geophysical prospecting technology, incorporating multi-element data sets, their “new” industry cutting-edge technologies and data analysis methodology, EarthEX will enhance Nine Mile Brook existing VMS Lens deposit and help identify and define the additional VMS Lenses or a source deposit. EarthEX technologies and expert analysis within the geology of the Bathurst Mining Camp, will lead to a successful 2021 Diamond Drill Program, thus further increasing our shareholder value ” stated Patrick J Cruickshank, President & CEO, Fiddlehead Mining Corp.



FMC Airborne EM Survey at “9 Mile Brook Project” (VMS Lens ★)

Daniel Card, President & Chief GeoPhysicist, (EarthEX)., “ We are excited to be working with Fiddlehead Mining on their 9 Mile VMS Lens deposit. This project shows great potential for enhancement for additional discoveries and we believe our focus on detail, expertise in modern technologies and pragmatic, results-driven approach to geophysical prospecting will help Fiddlehead Mining Corp. to quickly detect, delineate and discover their next deposit.

Fiddlehead Mining Corp. (FMC) is a private Canadian Junior Exploration Company focused on VMS exploration opportunities in the famous Bathurst Mining Camp (BMC) in Bathurst, New Brunswick.

The opinions, estimates, and/or projections contained herein are those of Fiddlehead Mining Corp. (FMC) as of the date thereof and are subject to change without notice. FMC makes every effort to ensure the contents contained herein have been compiled or derived from sources believed reliable and contain information and opinions, which are accurate and complete. However, FMC makes no representations or warranty, express or implied, in respect thereof, takes no responsibility for errors or omissions which may be contained herein and accepts no liability whatsoever for information and its contents. The information contained herein is not to be construed as an offer to sell or solicitation for an offer to buy any securities. The officers, directors or employees may from time to time acquire, hold or sell securities mentioned herein.

