



Fiddlehead Mining Corp.

VMS – Base Metals Exploration
Lead-Zinc-Copper-Silver-Gold
Bathurst Mining Camp, New Brunswick

www.fiddleheadmining.com



Forward Looking Statement

The opinions, estimates, and/or projections contained herein are those of Fiddlehead Mining Corp. as of the date thereof and are subject to change without notice. Fiddlehead Mining Corp. makes every effort to ensure the contents contained herein have been compiled or derived from sources believed reliable and contain information and opinions, which are accurate and complete. However, Fiddlehead Mining Corp. makes no representations or warranty, express or implied, in respect thereof, takes no responsibility for errors or omissions which may be contained herein and accepts no liability whatsoever for information and its contents. The information contained herein is not to be construed as an offer to sell or solicitation for an offer to buy any securities.

The officers, directors or employees may from time to time acquire, hold or sell securities mentioned herein.



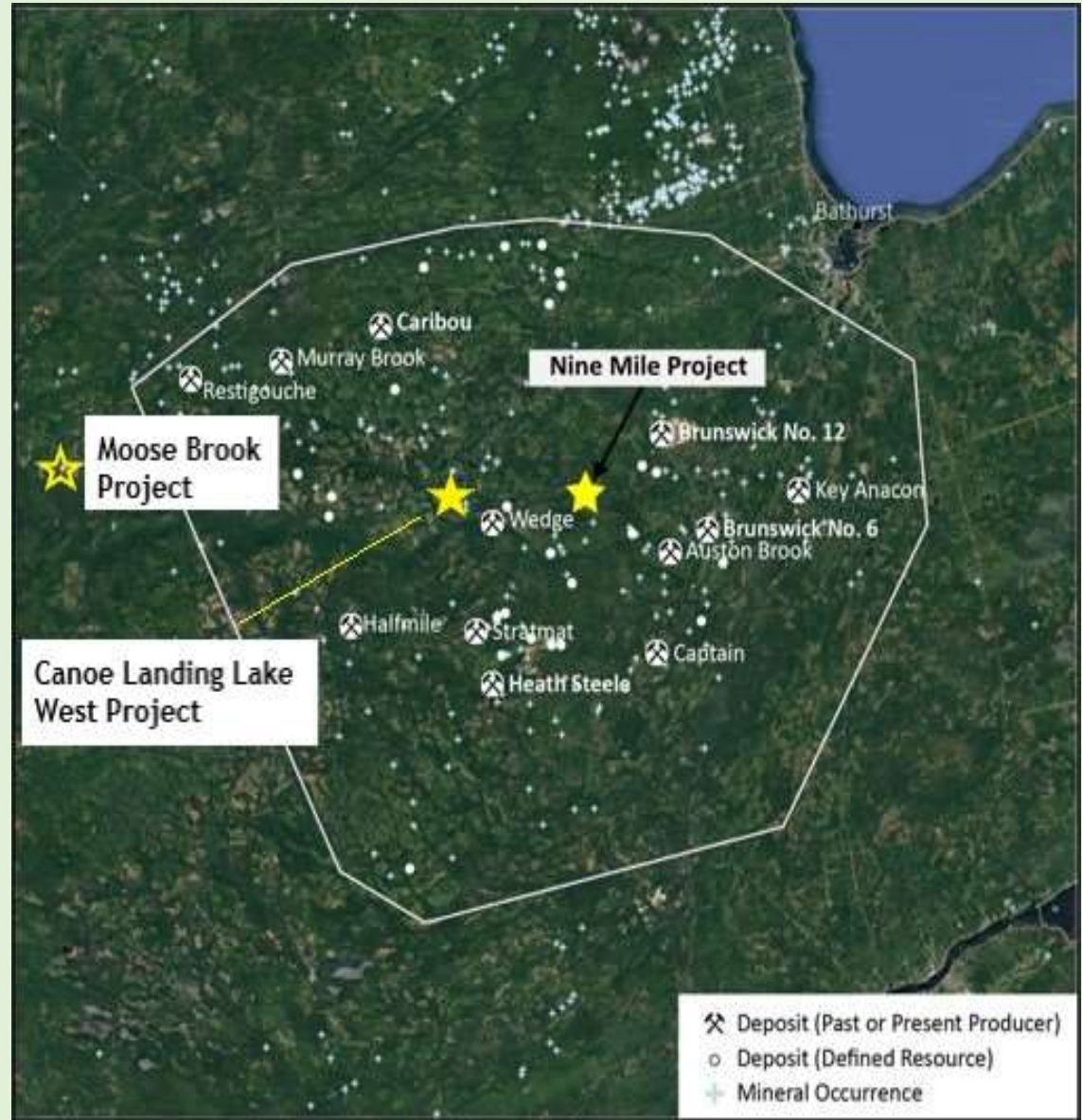
Introduction

- Fiddlehead Mining Corp. (Fiddlehead) is a NB Private Canadian Junior Exploration Company focused on **base metal exploration** in the Bathurst Mining Camp, New Brunswick, Canada.
- The Bathurst Mining Camp (BMC) is one of the top 3 Volcanogenic Massive Sulfide (VMS) mining districts in the world and has more than 46 known VMS deposits totaling > 475,000,000 tonnes.
- **The Nine Mile Brook Project**, a 100% owned Project, acquired in October 2019, with additional staking of Nine Mile Brook North & Nine Mile Brook North Extension Claims, has enabled us to fully acquire the entire Nine Mile Horizon Region.
- **FMC confirms (Aug 2020) Nine Mile Brook South Property** is host to an in-situ high grade massive sulphide lens, measuring approximately 10m x 2m at surface, uncovered by Freewest Resources in the mid 1990's & FMC confirms that the **LENS** is larger than previously reported.
- Stratigraphic drilling 250m along strike to the north successfully encountered the massive sulphide horizon, also showing a similar increase in grade and thickness at depth. No deep drilling has been carried out to date, and the occurrence remains open at depth to the east and along strike, as well as 250m of untested horizon between the main occurrence and north zones. Several untested geochemical and geophysical anomalies yet to be explored.
- The company has acquired 100% interest ownership in the **Canoe Landing Lake West**, an exploration prospect in favorable geology, which borders the Canoe Landing Lake Deposit to the east - >27 MT clastic massive sulphides - interpreted to be transported from a local in-situ sulphide body that is yet to be discovered.
- FMC has also acquired 100% Interest ownership in **Moose Brook** – VMS Potential Base Metals Property in close proximity to the Restigouche VMS Deposit



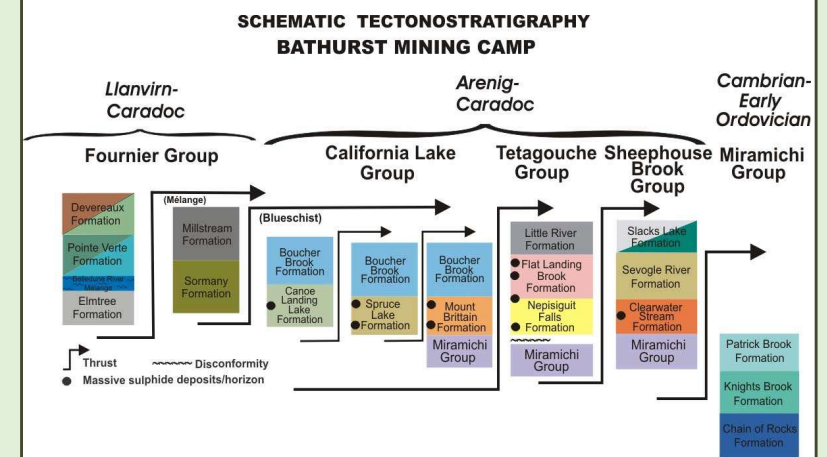
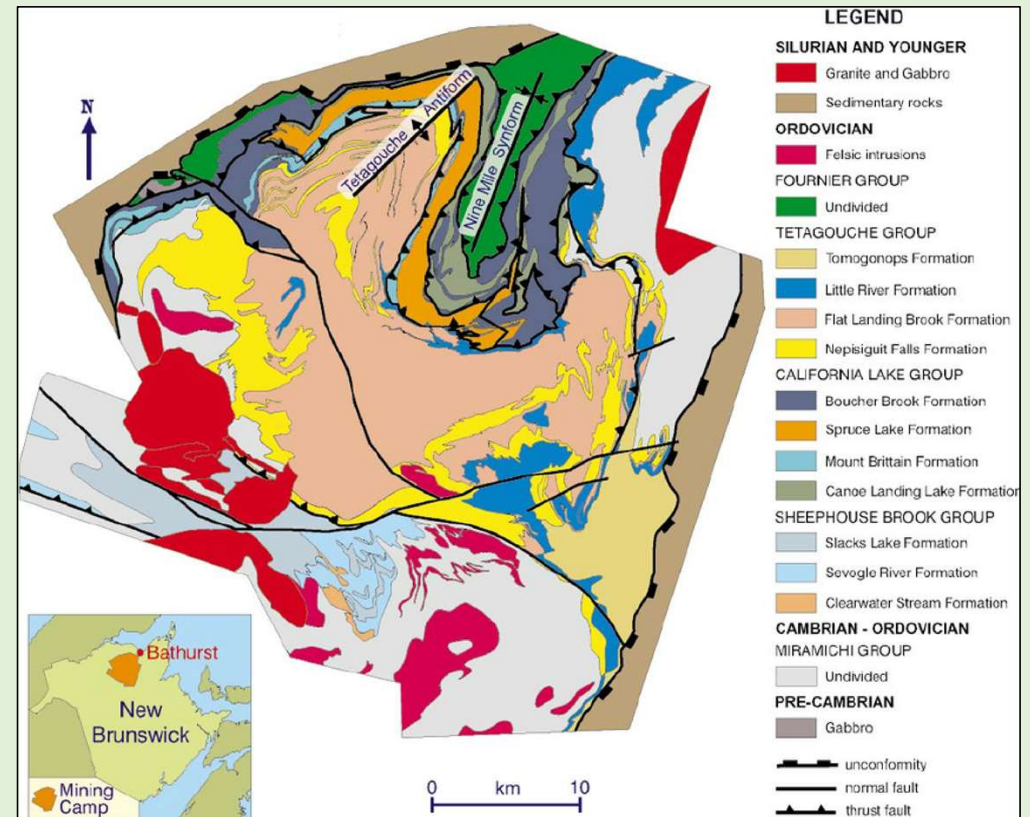
Bathurst Mining Camp (BMC)

- Fraser Institute Annual Survey of Mining Companies Ranked (BMC) #2 Best Jurisdiction in Canada & #4 in the WORLD
- (BMC) has over 95 VMS Occurrences & 46 Deposits, age dated to Early to Middle Ordovician Period (480-457 M Years Ago)
- Of these, 25 deposits > 1MT, with an Ave 12.74 MT with grades of: 4.72% Zn, 1.78% Pb, .64% Cu, 51 g/t Ag & .54 g/t Au
- Bathurst #12 Mine produced & operated for over 51 years – 330,000,000 Tonnes
- Mining friendly jurisdiction, with deep history of exploration and mining and talented labour pool.
- Excellent infrastructure, including extensive highway networks, rail connections and a deep water port at Belledune.
- There has been an average 1.5 Deposits Discovered per Year since 1960

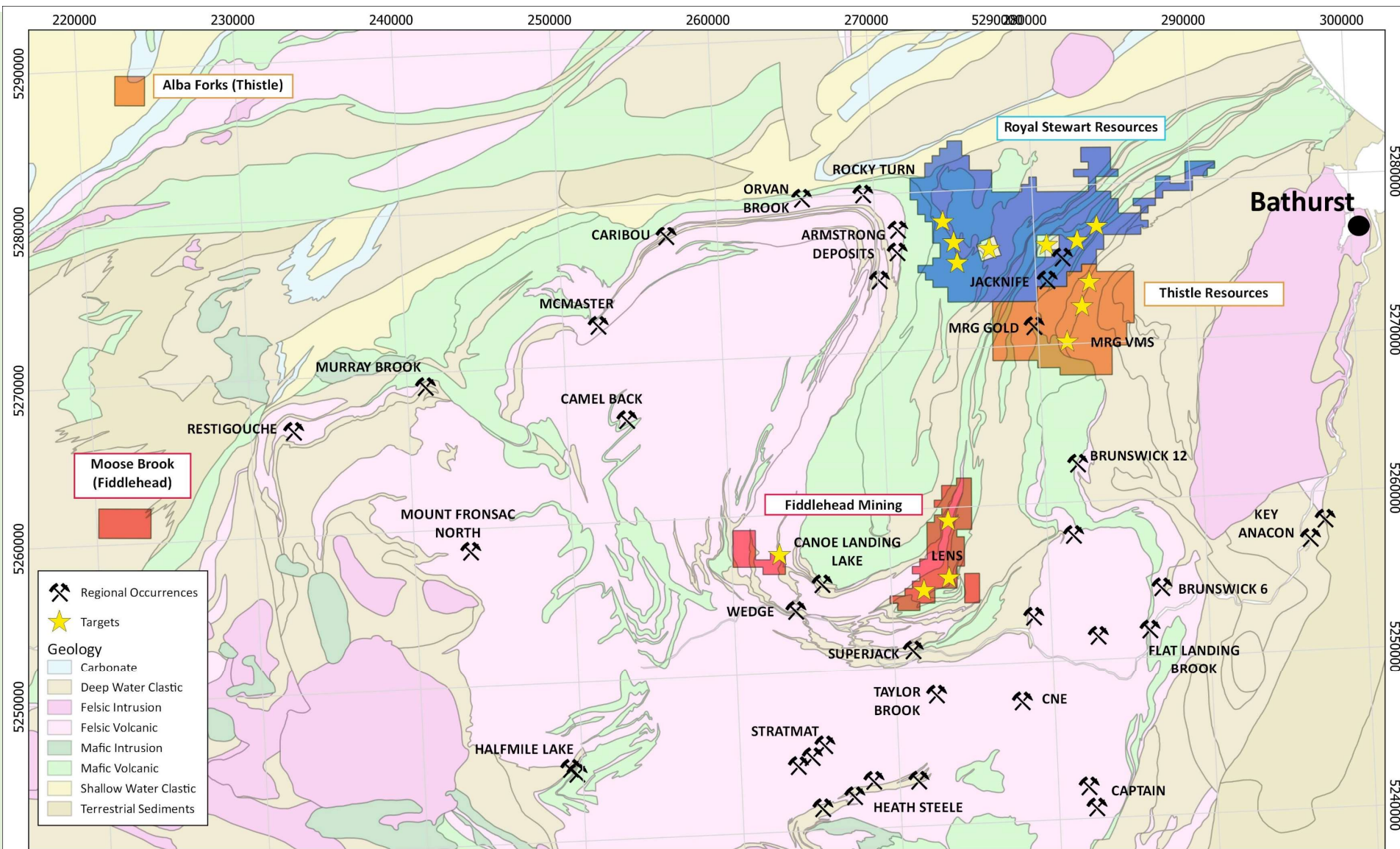


Bathurst Mining Camp - Geology

- Cambro-Ordovician age volcanic/ sedimentary environment.
- Volcanogenic Massive Sulphides (VMS) deposited in a sediment-covered back-arc continental rift basin.
- Subsequently deformed and metamorphosed during multiple collisional events related to east dipping subduction.
- Rocks of the BMC are subdivided into five groups: the Miramichi, Tetagouche, California Lake, Sheephouse Brook, and Fournier groups, all largely in tectonic contact with each other.
- Lower part of each group is dominated by continental felsic volcanics and upper part by mafic volcanics which are overlain by carbonaceous shale and pelagic chert.
- Most major VMS deposits in the camp are associated with the felsic volcanic rocks.



BATHURST MINING CAMP



Fiddlehead Mining Corp.
Date: March 23, 2021
Author: G.Lohman



Bathurst Camp Regional Deposits and Targets

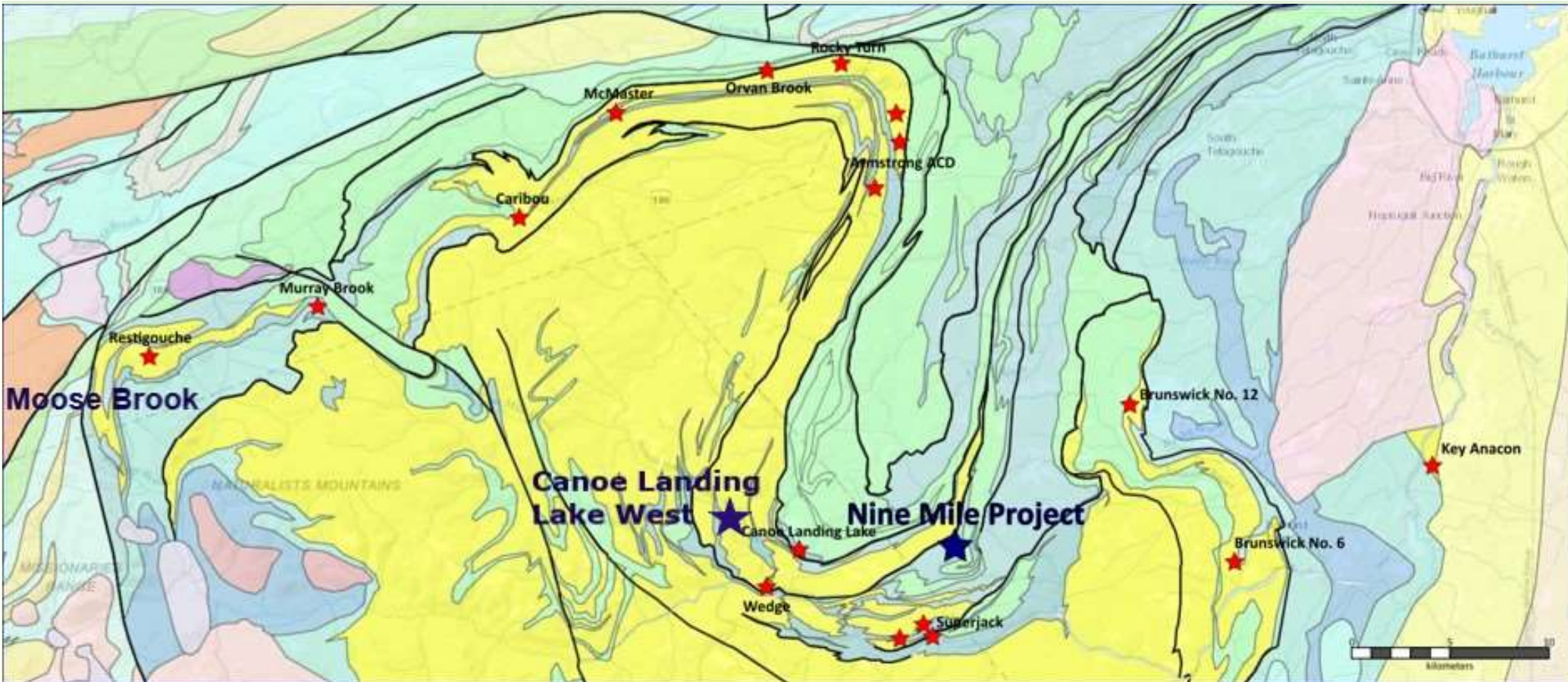
Scale: 1:300,000

Coord. System: NB Stereographic

0 5 10 15 20 km

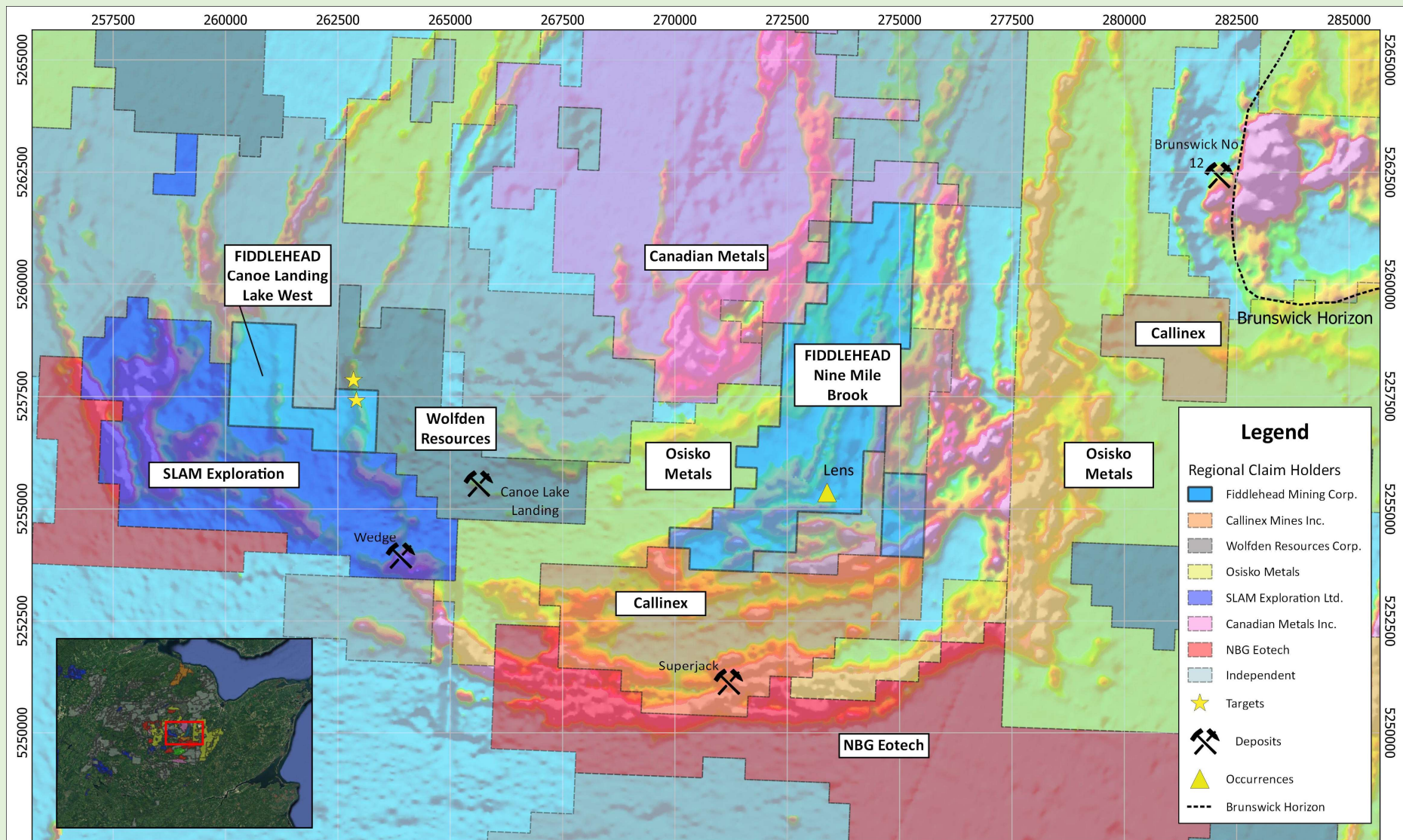


Project Area – General Geology



- Both properties are underlain by volcanic/sedimentary rocks belonging to the Canoe Landing Lake, Boucher Brook and Spruce Lake Formations of the California Lake Group.
- Several known VMS deposits within this group, the most noteworthy being the Caribou Deposit with a total historical resource of approximately 70 Mt grading 0.5% Cu, 1.6% Pb, 4.3% Zn, 51.3 g/t Ag and 1.715 g/t Au (Thomas et al. 2000).

FIDDLEHEAD NEIGHBOURS



Legend

Regional Claim Holders

- Fiddlehead Mining Corp.
- Callinex Mines Inc.
- Wolfden Resources Corp.
- Osisko Metals
- SLAM Exploration Ltd.
- Canadian Metals Inc.
- NBG Eotech
- Independent

Other Symbols

- Targets
- Deposits
- Occurrences
- Brunswick Horizon

Fiddlehead Mining Corp.
 Date: March 9, 2021
 Author: G.Lohman

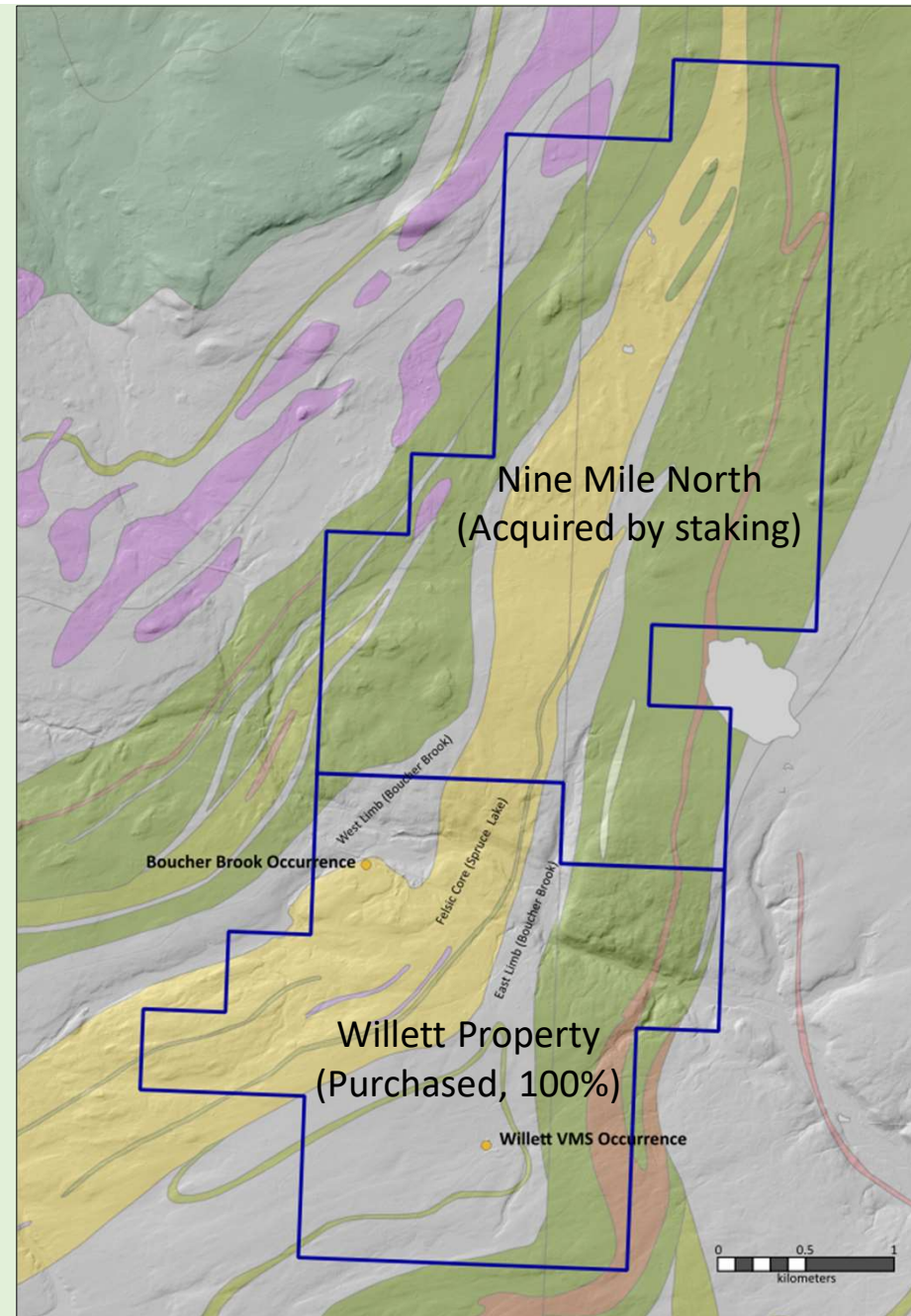
Fiddlehead Mining Corp.
Neighbouring Claim Holders and Aerodat

Scale: 1:105,000
 Coord. System: NAD83 UTM Zone 20N



Nine Mile Brook Project – Property Geology

- Property covers approximate N-S axis of Mud Lake Antiform – Felsic Volcanic core (Spruce Lake Formation) overlain by Shales (Boucher Brook Formation) and Basalts (Canoe Landing Lake Formation) which make up the East and West limbs of the fold.
- Willett VMS occurrence hosted within the dominantly sedimentary sequence on the eastern limb – analogous to the Superjack ABC deposits (5 km south) and Wedge deposits (10 km SW) which occur along strike within the same sedimentary sequence.
- Boucher Brook occurrence is a pyritiferous rhyolite occurring at the contact between the Spruce Lake and Boucher Brook formations, on the West Limb of the Mud Lake Antiform – Same stratigraphy that hosts the Canoe Landing Lake Deposit 7.5 km to the west.
- Strong precedent for VMS mineralization within this structure – with considerable strike length yet to be explored.



Nine Mile Brook (South) Project –VMS Lens Occurrence

- In-Situ lens of Massive Sulphides occurring at surface - 3 m thick and traceable over 10 m strike length.
- Occurs within an interpreted thrust block of highly altered rhyolite, hosted in shales of the Boucher Brook Formation.
- Abundance and variety of high-grade boulders in the area indicate a much larger bedrock source than what has been uncovered so far.
- Trenching and drilling has traced this horizon along strike for up to 500m and to a depth of 75m, where it appears to increase in both grade and thickness - only limited drill testing at depth.
 - **2019 Assays: 13.17% Cu, 12.83% Pb, 9.78% Zn, 474 g/t Ag, 4.1 g/t Au**
15.20% Cu, 0.36% Pb, 0.25% Zn, 30.8 g/t Ag, 2.0 g/t Au



Nine Mile Brook (South) Project – Field Visit



Above: Heavily altered Spruce Lake rhyolite.
Below: Stockpile of VMS Boulders excavated from Till.



Above: Nine Mile Brook (South) VMS LENS Exposed.



Nine Mile Brook – New Lens Exposure Assay Results



BV Labs Assays – December 21st 2020 (Bonanza Grade)

Table 1: BV Labs Assay Results

Sample #	Cu %	Pb %	Zn %	Pb-Zn Combined %	Au g/t	Ag g/t	Ag oz/t
209M0300	1.522	16.43	11.92	28.35	2.31	234	7.52
209M0301	0.657	12.29	>20.00	> 32.29 +	2.28	288	9.26
209M0302	0.992	8.36	>20.00	> 28.36 +	2.50	225	7.23
209M0303	0.195	>20.00	15.51	> 35.51 +	3.63	459	14.76
209M0304	0.875	13.03	>20.00	> 33.03 +	1.76	139	4.47
209M0305	0.318	>20.00	14.72	> 34.72 +	3.01	785	25.24
209M0306	1.429	>20.00	19.73	> 39.73 +	3.67	217	6.98
209M0307	8.902	8	10.83	18.83	1.78	328	10.55

Table 2: Sample Results, Nine Mile Brook

Sample #	Cu %	Pb %	Zn %	Pb-Zn Combined %	Au g/t	Ag g/t	Ag oz/t
20NM0200A	12.402	0.4	0.04	0.44	1.179	73	2.35
20NM0200B	11.209	0.32	0.04	0.36	1.089	67	2.15
20NM0201A	2.803	17.37	17.63	35.00	2.542	66	2.12
20NM0201B	3.385	17.12	15.42	32.54	2.938	85	2.73
20NM0202	2.625	5.81	16.08	21.89	3.298	72	2.31
20NM0203	2.108	17.9	9.08	26.98	3.764	98	3.15
20NM0204	14.142	1.63	1.65	3.28	2.377	66	2.12
20NM0205	4.238	5.52	17.66	23.18	2.969	70	2.25



Figure 1: Sample 209M0306 (Front)

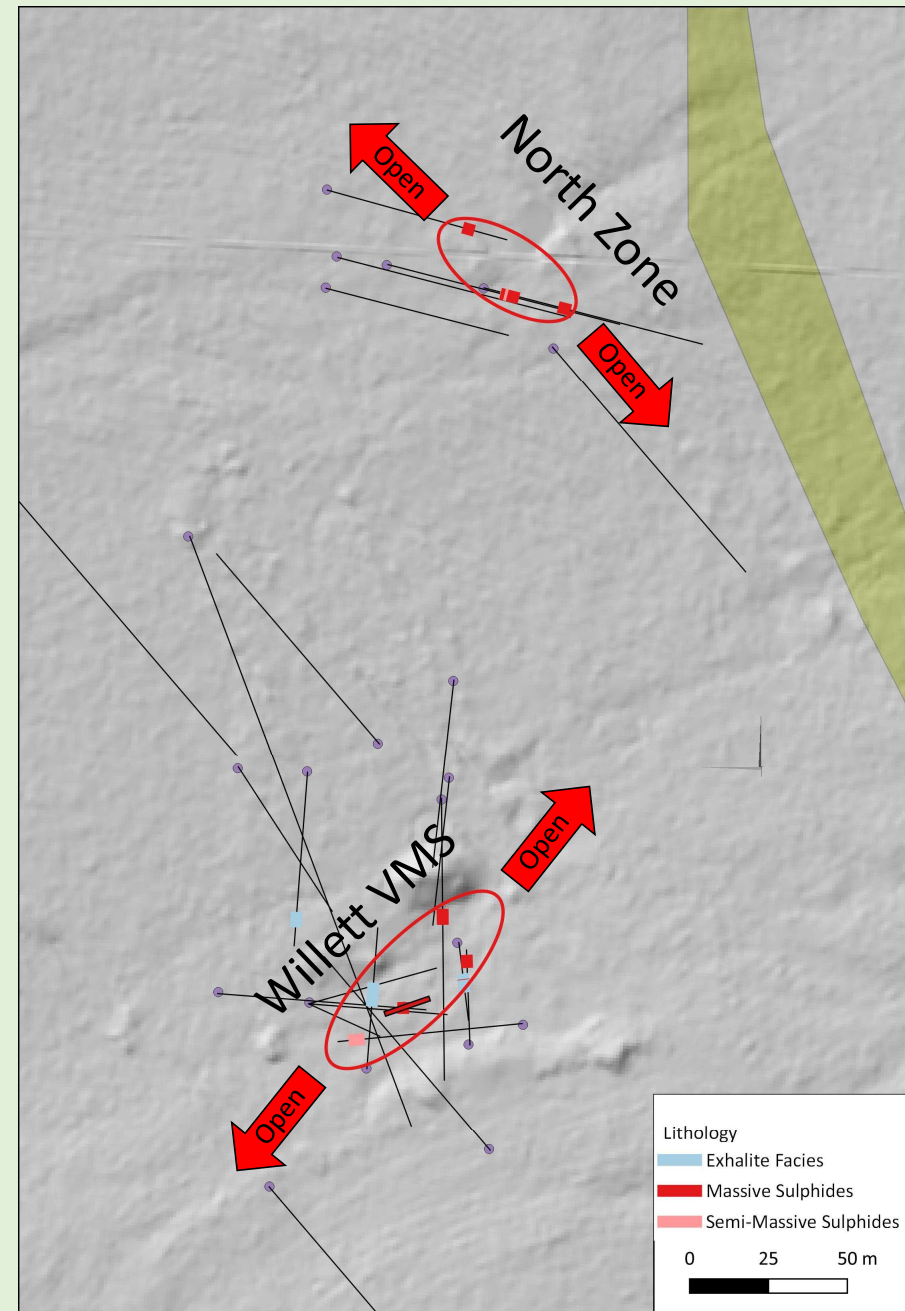


Nine Mile Brook Project – Historic Drilling

- Historic drill programs carried out in the 1950's, 1970's and 1990's.
- Most recent program by Freewest in 1995 successfully defined multiple zones of mineralization.
- Program proved unsuccessful in extending the mineralization to depth, where thrust faults abruptly cut mineralization.
- High potential remains to encounter significant mineralization at depth by following trend down dip, targeting repeating fault sequences or telescoped deposits.
- Both zones remain open along strike.

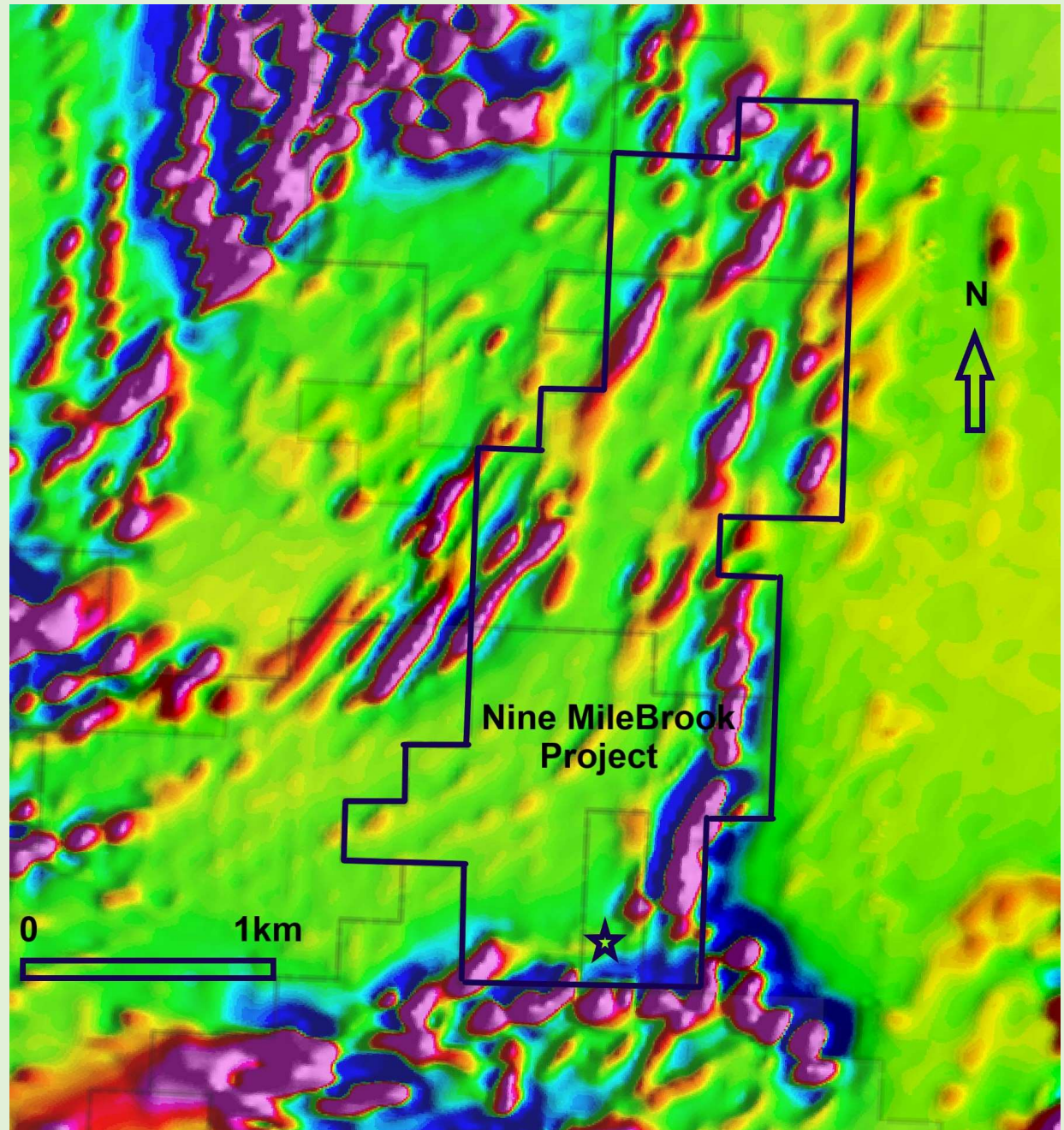
Highlights:

12.83% Lead(Pb), 9.78% Zinc(Zn) **22.61% combined**, 13.17% Copper(Cu), 474 g/t (14.82 oz/t) Silver(Ag) & 4.1 g/t Gold(Au).



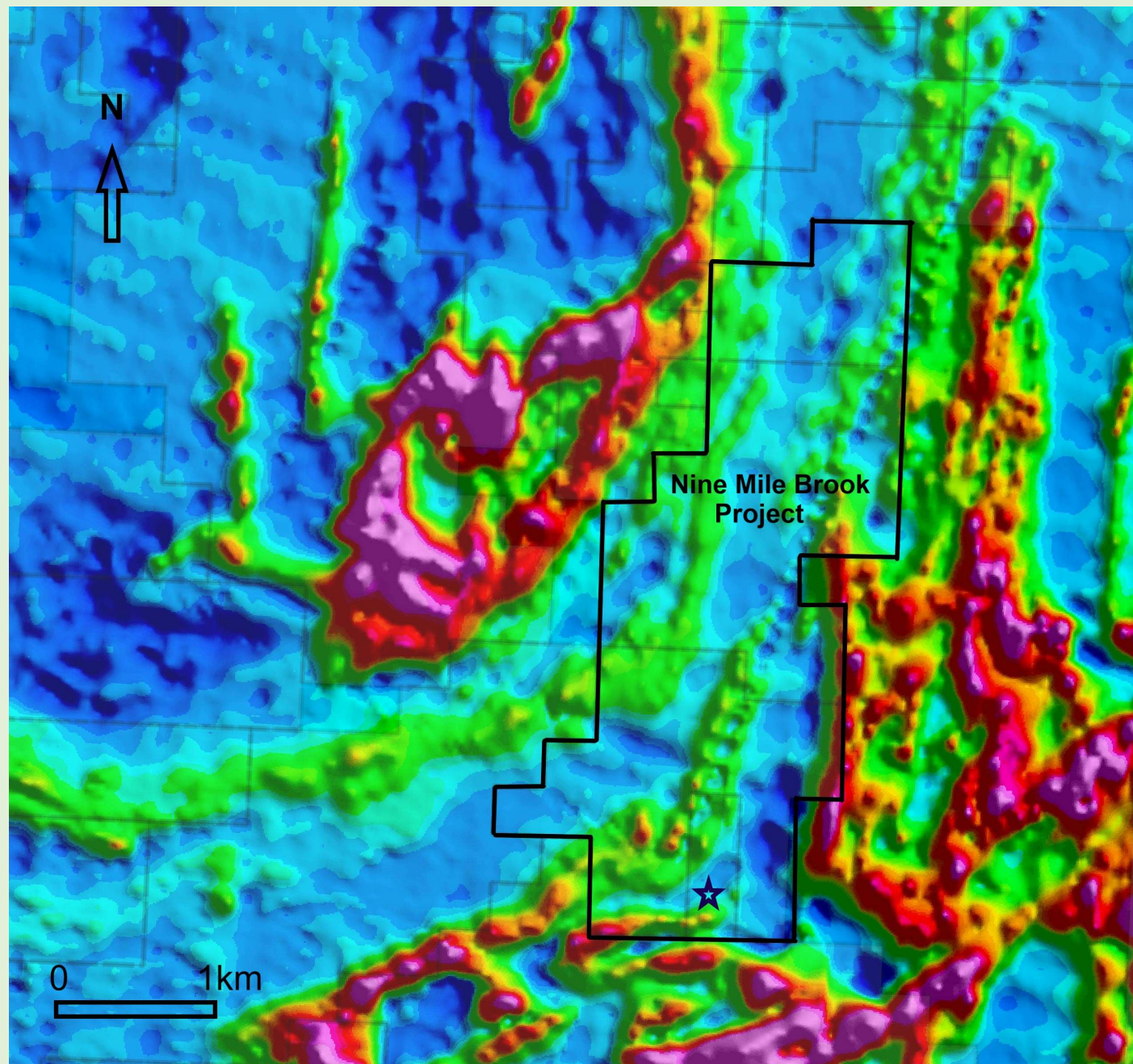
Nine Mile Brook Project – Airborne Magnetics (GeoPhysics)

- Nine Mile Brook VMS Lens ★
- Low Magnetic domain flanked by higher magnetics
- Mineral occurrences proximal to the domain boundaries
- Similar Geological setting as the 27MT Canoe Landing Lake VMS Deposit to the west. (hosted in the Magnetic Low)
- Hosted within the same geological formation as is the Canoe Landing Lake Deposit



Nine Mile Brook Project – Airborne EM (GeoPhysics)

- Nine Mile VMS Lens ★
- Located within a low response domain flanked by more conductive rocks
- Mineral occurrences associated with moderate response, as is the 27MT Canoe Landing Lake Deposit

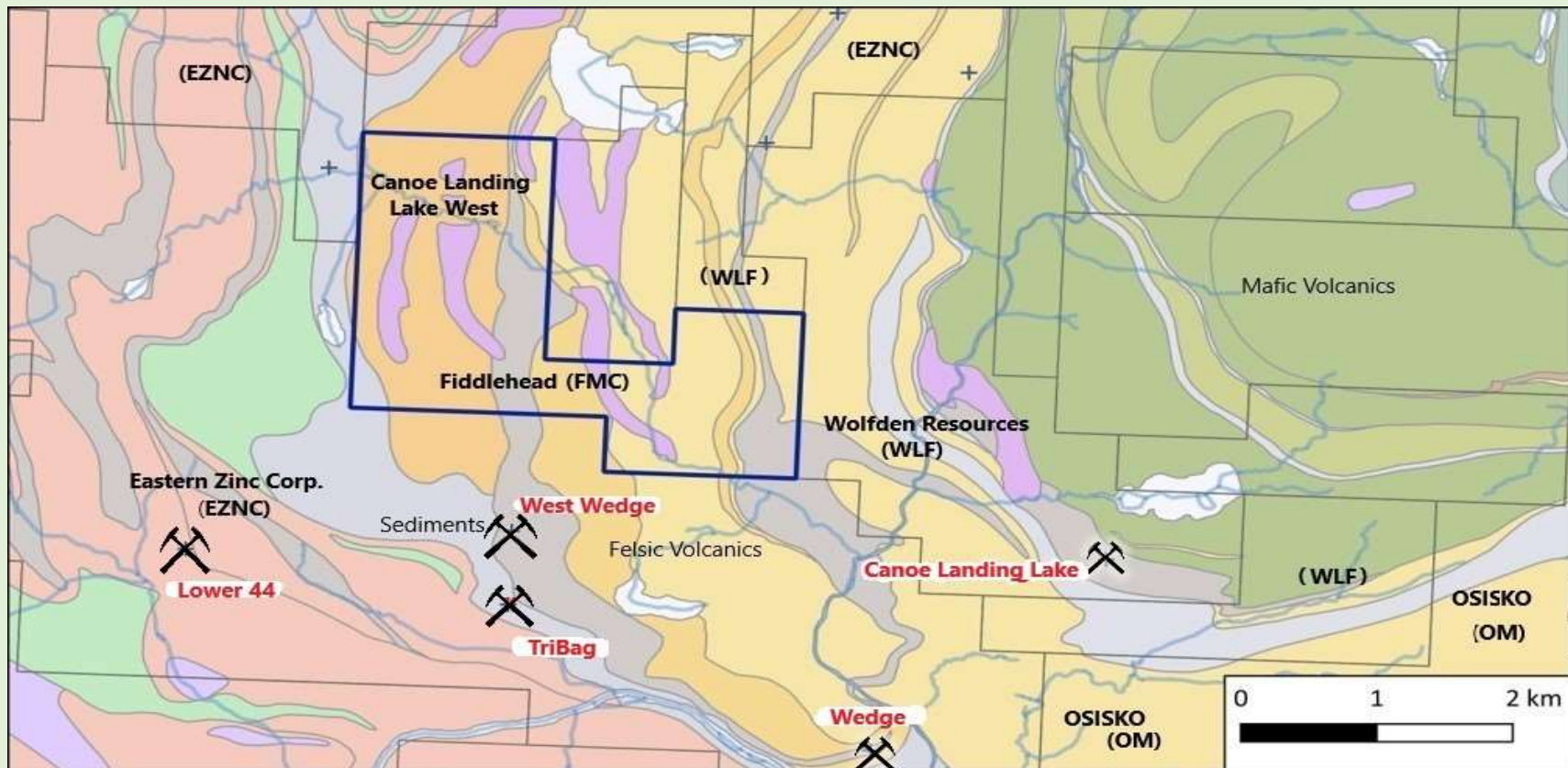


Nine Mile Brook Project – Drone Analysis



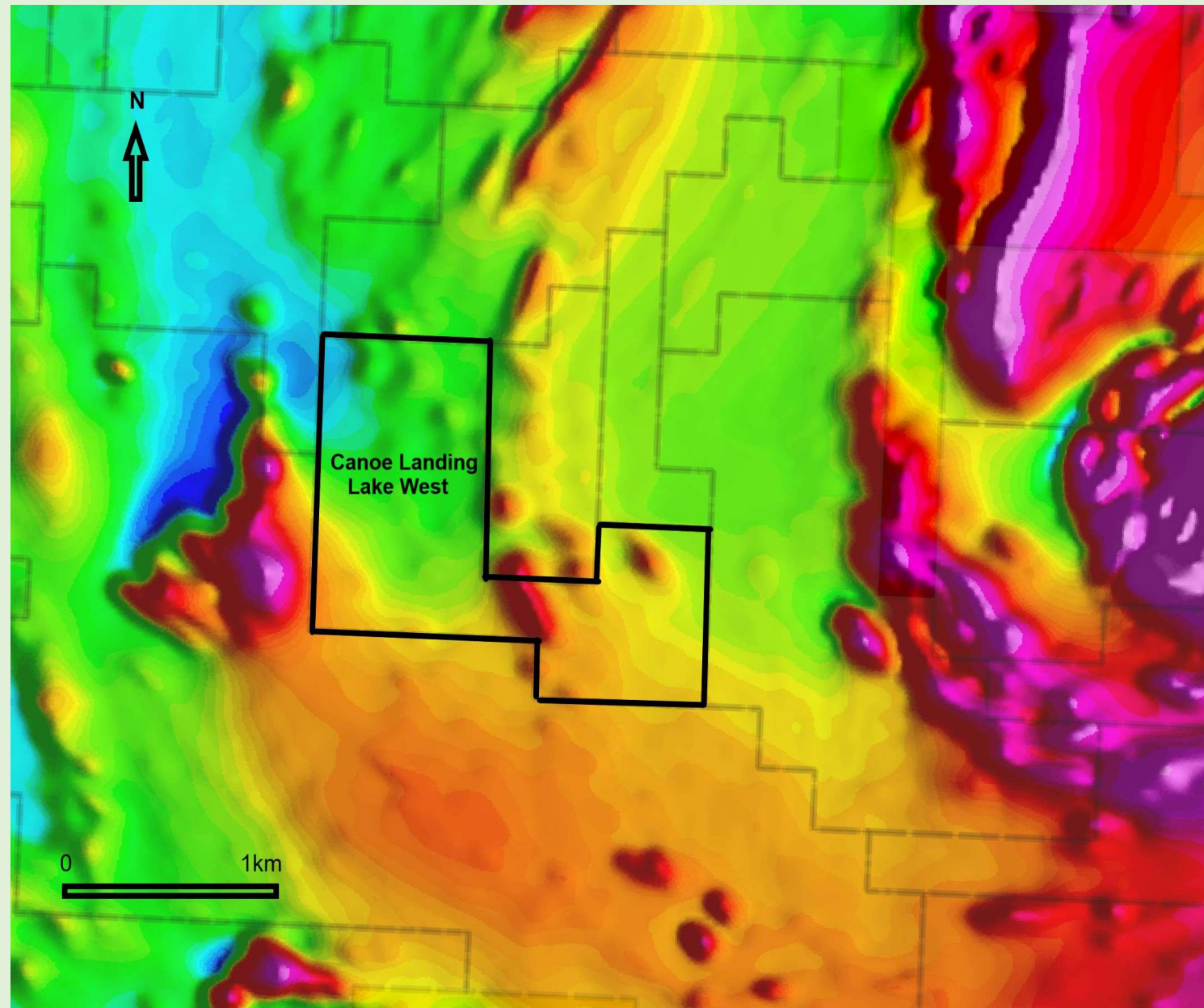
Canoe Landing Lake West Property

- 524-hectare property acquired – Spring 2020.
- Underlain by a thick volcanic sequence belonging to the Mount Brittain and Spruce Landing Lake Formations, covering the same stratigraphy that hosts the Armstrong A-B and Caribou Deposits.
- Proximal to the Canoe Landing Lake deposit – a 27Mt sulphide body interpreted to be composed of clastic VMS material, of which the source is yet unknown.
- Newly Acquired Project by FMC – A thorough review of historic data is underway to prioritize exploration plans to be carried out beginning in Spring, 2021.



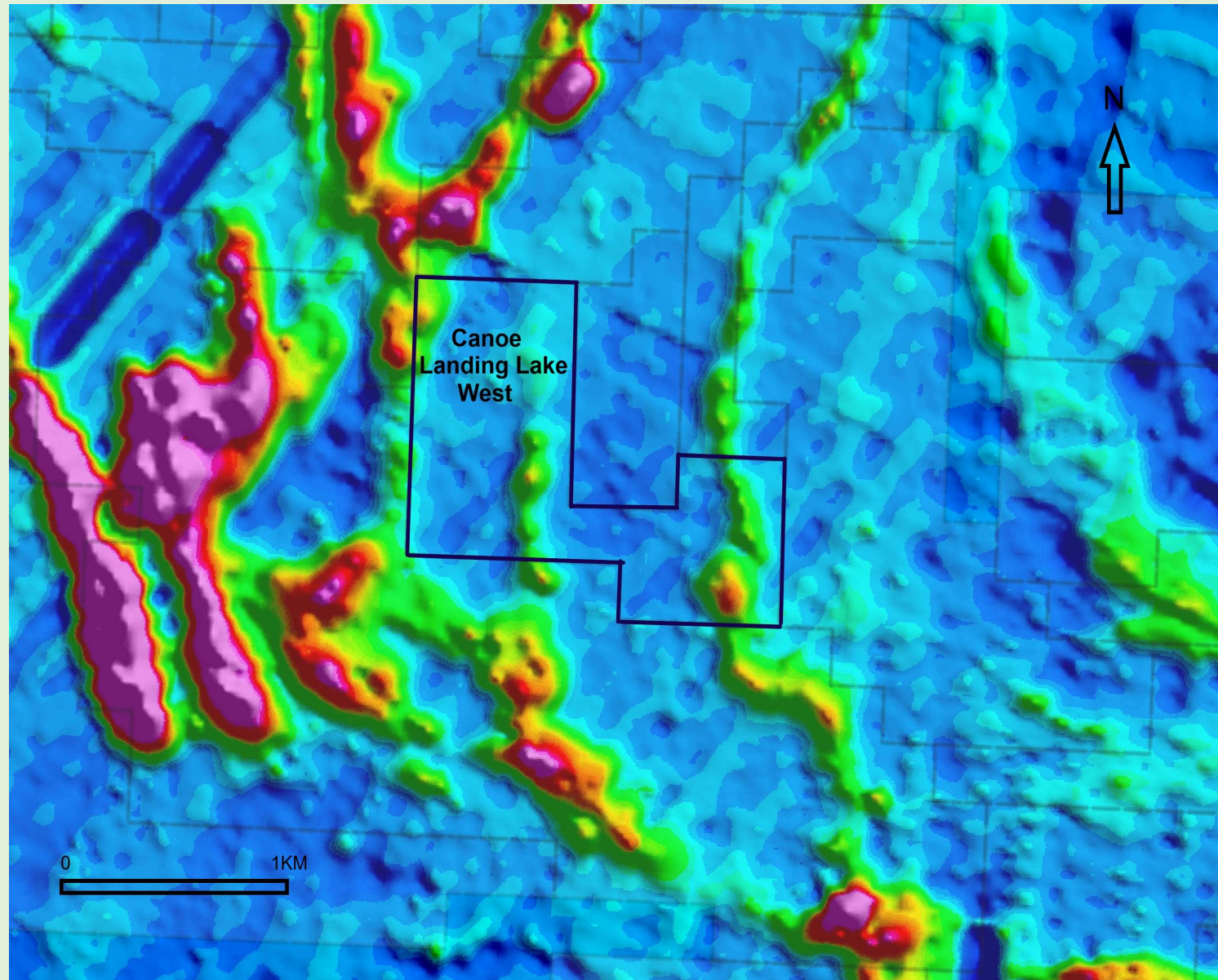
Canoe Landing Lake West – Airborne Magnetics (GeoPhysics)

- Placed within a weak to moderate low and flanked by higher magnetics
- North trending magnetic high continues to the California Lake Silver (Ag) Deposit.



Canoe Landing Lake West – Airborne EM (GeoPhysics)

- Weak to moderate linear conductors similar to Canoe Landing Lake deposit.
- Eastern most conductor, is the southern extension of the same feature that hosts the California Lake Silver (Ag) Deposit to the North.



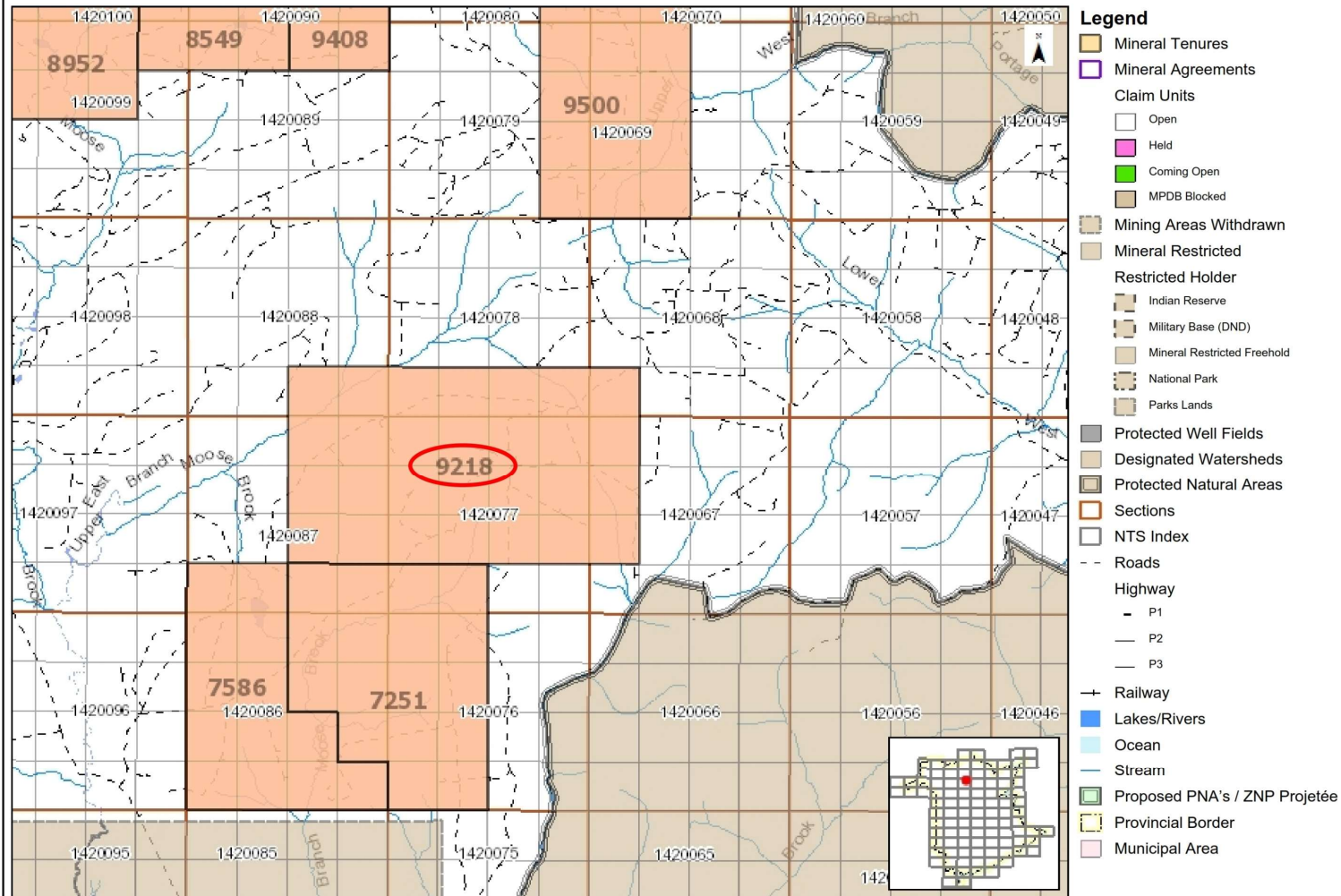




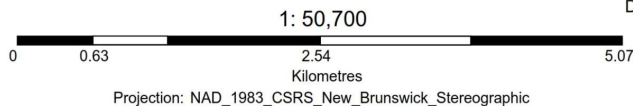
Moose Brook Project (BMC-VMS)

NB e-Claims

Fiddlehead Moose Brook Licence 9218



This map is created from the NB e-Claims for illustrative purposes only. New Brunswick Department of Energy and Mines cannot warrant or guarantee that the information is accurate, complete or current at all times; it accepts no liability or responsibility for any errors, inaccuracies and/or omissions.



Note:

Accelerated 2021 Work Program

- EarthEX Geophysical Solutions (Re-Processing, 3D & AI Interpretation).....(Q1 - 2021)
- UAV Drone Mag Survey – Analysis & AI Interpretation
- Diamond Drilling, including:
 - 1000m – First Stage drilling on Nine Mile Brook (South) VMS LENS
 - Including Downhole IP Analysis
 - Northern extension – testing extension at depth, along strike and infill to surface.
(Commence Q2- 2021) Permits Applied

Finalize Additional Property Acquisitions.....(Ongoing)

	Description	Budget
Acquisition	Property Acquisitions	\$100,000
Compilation/Modelling	Compilation of historic work, including review of core at Madran, 3D geological modelling, target generation	\$20,000
UAV Drone Survey	UAV Drone Survey – 3D & AI Interpretation (9 Mile Brook)	\$100,000
Diamond Drilling	Diamond Drill Program –2000m (9 Mile Brook)–VMS Lens	\$200,000
Miscellaneous	Housing, meals, travel, contingency	<u>\$80,000</u>
	Total:	\$500,000



Patrick J. Cruickshank, MBA President & CEO (Chairman & Director)

Mr. Cruickshank is the Founding – President & CEO of Thistle Resources Corp.

Mr. Cruickshank, received his MBA at Canada’s Highly Prestigious York University – Schulich School of Business. Patrick brings a wealth of experience from the Private Wealth Management Sector, Protecting & Managing Wealth for over 15 years @ Merrill Lynch, Citigroup Capital Markets, Smith Barney and Legg Mason to name just a few. Patrick was an NFLPA Financial Advisor for over a decade helping financially educate, wealth creation & Longterm wealth preservation strategies for NFL Professional Players and their families.

Mr. Cruickshank also serves on the Boards of:

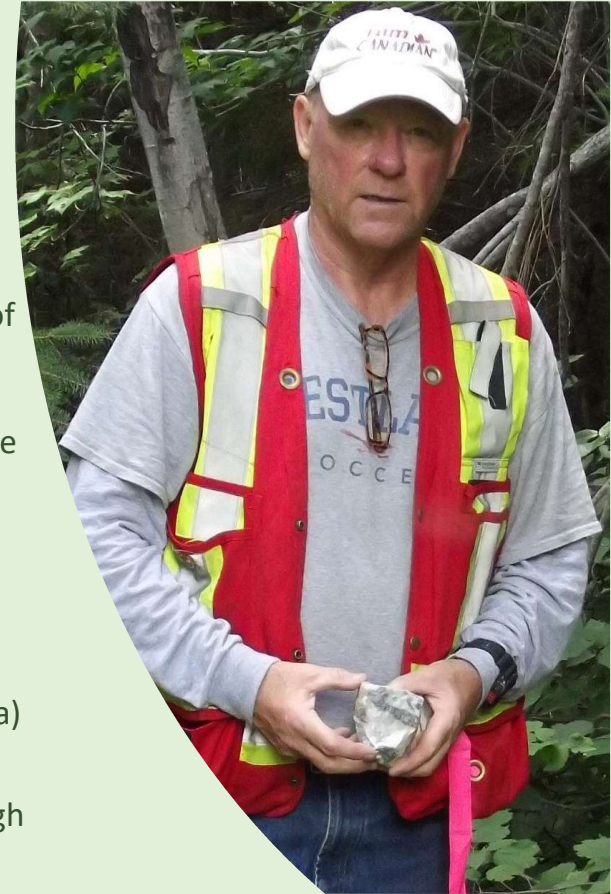
Atacama Copper Exploration (Canada & Chile)
Fiddlehead Mining Corp (NB, Canada)

Royal Stewart Resources Corp. (NB, Canada)
Minotaur Atlantic Exploration Ltd (NS, Canada)

Mr. Cruickshank specializes in establishing and growing companies, driving shareholder value through a long-term business strategy from inception to growth to exit. Mr. Cruickshank is often invited to speak @ Resource Summits in Canada, Chile, Peru, London & Germany. Patrick is an active Panel Guest Speaker of the Toronto Stock Exchange Venture (TSX-V) & the Santiago Stock Exchange (SSE) Industry Events. Mr. Cruickshank is frequently interviewed on Radio Show & Industry Publications within the Resource Sector.

Mr. Cruickshank, is a Former Canadian Olympic/U23 Soccer Player and US NCAA D1 Collegiate Player. Patrick is also a very highly decorated US & Canadian Coach, from being a Professional Soccer Player to coaching Canada’s Women to University of Mississippi to US Olympic Development Staff Coach. Patrick holds his US Soccer “A” License & Canadian National Coaching Licenses.

Patrick now enjoys coaching his 6 children.



Gary Lohman, B.Sc., P.Geo

COO & SVP of Exploration (Director)

Mr. Lohman is a Founder and Chief Operating Officer of Royal Stewart Resources Corp. As an exploration geologist, he has 40 years of experience in both precious and base metal exploration within the Americas Management experience within and outside of the mining industry.

Skilled in geological, geochemical and geophysical exploration techniques in a wide variety of settings including Volcanogenic Massive Sulphides (VMS), Porphyry & IOCG (Copper/Gold) Style Deposits. Experience includes evaluations / research conducted on bonanza grade and bulk tonnage gold-silver properties in Canada, Mexico, California, Ecuador & Chile. Evaluated and conducted research on a variety of Industrial mineral projects including graphite, titanium, zeolites and building stone.

Mr. Lohman is also the President of Atacama Copper Exploration Limited in Chile. A Private Canadian Exploration Company focused on Large Scale IOCG – Cobalt Exploration.

Gary also holds several Board Positions:

Atacama Copper Exploration Limited, Minotaur Atlantic Exploration Limited,
Royal Stewart Resources Corp & Thistle Resources Corp.

Gary is based in Bathurst, New Brunswick throughout the year, conducting exploration in addition to working with various agencies within the provincial government including the Department of Mines and Forestry.



Matthew R. Pitts, B.Sc., P. Geo. **SVP of Exploration & Technical Committee**

Matthew is a senior exploration geologist with over 7 years' experience spanning multiple continents and deposit types.

Most recently, Matthew was the Senior Project Geologist for Trevali Mining Corporation's New Brunswick exploration team, where he oversaw the company's mineral exploration and resource expansion activities in the highly prolific Bathurst Mining Camp. During his 5+ years with Trevali, Matthew either led or was directly involved in several successful exploration programs including new discoveries at the Stratmat, Halfmile, and Caribou Deposits, and significant resource definition/conversion programs at the Stratmat, Heath Steele, Halfmile, Caribou and Restigouche deposits. As part of the companies continued growth in New Brunswick and abroad, Matthew was heavily involved in the compilation, quality control and comprehensive review of historic datasets in order to progress commissioning at the Caribou and Restigouche Mines, and assess potential brownfield and greenfield exploration opportunities.

Prior to joining Trevali, Matthew led several greenfield-diamond drilling exploration programs searching for Archean greenstone Gold deposits in the tropical rainforests of Guyana, South America.

Matthew is fluent in a host of GIS and geological modelling software including MapInfo, QGIS, ArcGIS, LeapFrog Geo and Discover3D. Matt graduated with a Bachelor of Sciences (Geology) from Acadia University, Wolfville, NS in 2011.





DANIEL CARD, P.GEO, RP.GEO EARTH EX GEOPHYSICAL SOLUTIONS INC.

EarthEx Geophysical Solutions Inc was founded in 2014 in Selkirk, Manitoba, Canada by its Chief Geophysicist, Daniel Card. Mr Card, P.Geo, RP.Geo, a professional GeoPhysicist, holds a BSc. Honours Degree from the University of Manitoba and is currently registered in Canada and Australia.

His career started with Xstrata (now Glencore) where he worked his way up to Project Geophysicist at Raglan Mine in northern Quebec, and then went on to serve at Xstrata's Western Australian operations Cosmos and Sinclair in the Leinster-Wiluna nickel camp, where he played a key role in the discovery and definition of the 9 MT Odysseus Nickel Sulphide Deposit, which is soon going into production for Western Areas Ltd.

Following his tenure at Xstrata, he went on to work as Senior Geophysicist for Southern Geoscience Consultants in Perth, WA, where he served as the staff electromagnetics specialist. He also served as the technical lead on many mineral exploration projects. He continued as a senior technical consultant to Abitibi Geophysics and an expert peer reviewer for the journal "Exploration Geophysics".

At EarthEX, we are specialized in geophysical prospecting, data interpretation, 3D modelling and target definition for hard-rock minerals. We work with cutting edge technologies and data analysis methodology.

In the search of all mineral commodities for projects across the globe, Daniel has worked extensively with geophysical data of all varieties. Particularly, unique experiences that he holds close to the heart include; training local scientists in the use of geophysical equipment in the VMS regions of Eritrea, and an internship at NASA's Lunar and Planetary Institute where he analyzed ground penetrating satellite radar data from Mars' polar regions.

Since its inception, EarthEX has gained widespread recognition for its scientific accomplishments for its clients & partners.

Ronald Godin, B.A., LLB., QC Director & Corporate Strategic Advisor

A native of Bathurst, New Brunswick, Mr Godin received a Bachelor's degree in Political Science in 1972 from the Universite de Moncton and being awarded the Governor General of Canada Medal for the Highest Academic Achievement of his graduating class.

Mr Godin continued his academic journey at the prestigious University of Ottawa Law School and graduated in 1975. Ron became a Crown Prosecutor for the Department of Justice of New Brunswick from 1975 – 78. Mr Godin was Appointed Queens Counsel in 1994.

He transitioned to a very successful Private Law Practice and in 1994 was appointed Queen's Counsel where he remained until 2004, when he was appointed by the Legislative Assembly of the Province of New Brunswick as the 1st Consumer Advocate for Insurance for the Province of New Brunswick. Mr Godin held that position until his retirement in 2017.

Mr Godin has a long list of community service & outreach endeavors. He was the Founding President of the Chaleur Regional Hospital Foundation, Bathurst, NB. Mr Godin has always been an active speaker at many Legal Forums and participated in various professional committees of the Law Society of New Brunswick and was a regular speaker at the Bar Admission Courses.

Mr Godin remains an active advocate in his community and mentor. Ron is fluent in French & English. Ron has 2 children and now enjoys spending time with his Grandson in Bathurst New Brunswick.



Michael O. Jaynes, B.Sc., P. Eng., Environmental Eng & Technical Advisor

Mr. Jaynes received his B. Sc. in Chemical and Petroleum-Refining Engineering from the highly acclaimed Colorado School of Mines in 1991. Mr. Jaynes is a licensed Professional Engineer (in Florida, Mississippi, and Texas) with over 28 years of experience in environmental engineering including contamination assessment, remedial investigations, feasibility studies, remedial system design and implementation, and project management. His experience includes preliminary assessments, site investigations, well drilling and direct-push technology oversight, groundwater, surface water, sediment, and soil sampling, landfill studies, aquifer characterization, site inspections, and general construction oversight. Mr. Jaynes' expertise is in remedial system design, installation and construction oversight, system monitoring, operation and maintenance, underground injection remedies, and comprehensive environmental response. Mr. Jaynes' experience includes work at industrial sites, RCRA landfills, U.S. Naval Facilities, underground storage tank/petroleum sites, commercial drycleaner/chlorinated solvent sites, U.S. Coast Guard Facilities, Targeted Brownfields sites, and National Priority List (NPL) Superfund sites.

Mr. Jaynes, who played both D2 soccer and baseball in college, is also a licensed USSF soccer coach with 12 years of club coaching experience and currently coaches high school soccer in Austin, Texas. Mr. Jaynes lives with his wife, Kaye, and their daughter Evan, in Lakeway, Texas.

Team Structure

Patrick J. Cruickshank, MBA

President & CEO

Chairman - Director

York Univ. – Schulich School of Business

Gary Lohman, B.Sc., P. Geo.

SVP Exploration

COO & Director

University of Toronto

Daniel Card, B.Sc., P.Geo, RP.Geo

Technical Advisory Committee

Univ. of Manitoba

Matthew R. Pitts, B.Sc., P. Geo.

SVP of Exploration

Acadia University, Nova Scotia

Michael O. Jaynes, B.Sc., G. Eng., CPR

Environmental Engineer

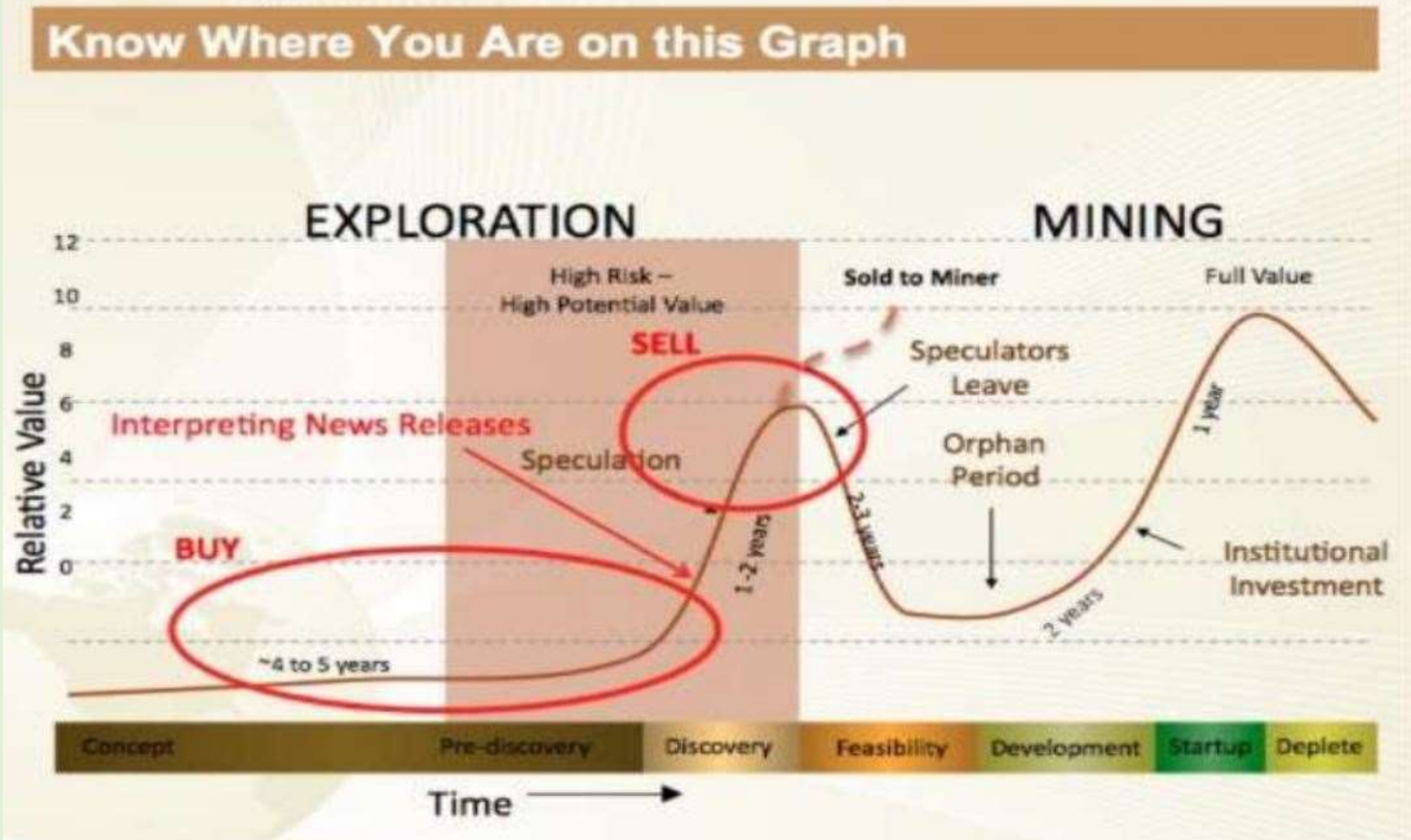
Colorado School of Mines, Colorado

Boughton Law Partners PC
(Vancouver, British Columbia)

Byrne – Lenihan Legal Team
(Bathurst, New Brunswick)



Know Where You Are: “The Mining Exploration Investor Life Cycle”



Fiddlehead Mining Signs Agreement with EarthEX Geophysical Solutions Inc.



FIDDLEHEAD MINING CORP.
ANNOUNCES

Signs Agreement with EarthEX Geophysical Solutions Inc (MB)



***** FOR IMMEDIATE RELEASE *****

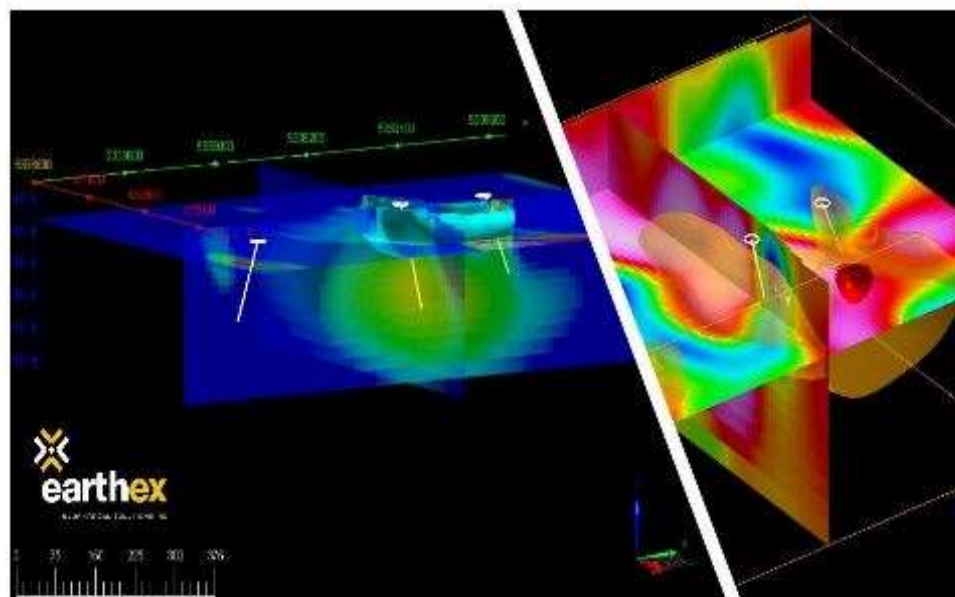
BATHURST, New Brunswick, Canada – (Friday September 25th, 2020)

Fiddlehead Mining Corp. ("FMC" or the "Company") is pleased to announce its new partnership with EarthEx Geophysical Solutions Inc. (EarthEx), a geophysical consulting firm based in Selkirk, Manitoba, Canada. EarthEx specializes in the analysis, interpretation, 3D modelling and acquisition of data from Electromagnetic (EM), Induced Polarization (IP), Magnetic, VTEM and Gravity surveys.

EarthEx has previously demonstrated their ability to identify new targets within the Bathurst Mining Camp, including definition of a new target trend, following a discovery hole which had intersected 28.6m assaying 57 g/t Ag. This partnership will not only confirm & enhance our present targets prior to drilling in Q4 2020 and Q1 2021, it will also increase our exploration opportunities and success rate as new targets are generated.

Geophysical prospecting, data integration and analysis by EarthEx will incorporate all geological, geochemical and geophysical elements into a project model with prioritized target zones, resulting in "Target Definition" for Hard Rock Minerals. The final product will characterize specific targets within the larger trends, all prioritized with recommendations for additional work if required prior to drilling. Ideally, collar coordinates for drilling will be provided.

"We are pleased to have EarthEX join our Technical Team. Utilizing new geophysical prospecting technology, incorporating multi-element data sets, their "new" industry cutting-edge technologies and data analysis methodology, EarthEX will enhance Nine Mile Brook existing VMS Lens deposit and help identify and define the additional VMS Lens or source deposit. EarthEX technologies and expert analysis within the geology of the Bathurst Mining Camp, will lead to a successful Fall 2020 Diamond Drill Program, thus further increasing our shareholder value." stated Patrick J Cruickshank, President & CEO, Fiddlehead Mining Corp.



Daniel Card, President & Chief Geophysicist, (EarthEX), "We are excited to be working with Fiddlehead Mining on their 9 Mile VMS Lens deposit. This project shows great potential for enhancement & additional discoveries and we believe our focus on detail, expertise in modern technologies and pragmatic, results-driven approach to geophysical prospecting will help Fiddlehead Mining Corp. to quickly detect, delineate and discover their next deposit.

Fiddlehead Mining Corp. (FMC) is a private Canadian Junior Exploration Company focused on VMS exploration opportunities in the famous Bathurst Mining Camp (BMC) in Bathurst, New Brunswick.

The opinions, estimates, analysis/projections contained herein are those of Fiddlehead Mining Corp. (FMC) as of the date thereof and are subject to change without notice. FMC makes every effort to ensure the contents contained herein have been compiled or derived from sources believed reliable and contains information and opinions, which are accurate and complete. However, FMC makes no representation or warranty, express or implied, in respect thereof, takes no responsibility for errors or omissions which may be contained herein and accepts no liability whatsoever for information and its contents. The information contained herein is not to be construed as an offer to sell or subscription to an offer to buy any securities. The officers, directors or employees may from time to time acquire, hold or sell securities mentioned herein.



Canada

WORKSAFE
TRAVAIL SÉCURITAIRE NB



**PATRICK J. CRUICKSHANK, MBA
PRESIDENT & CEO**

patrick@fiddleheadmining.com
506-800-0156

**GARY LOHMAN, P. GEO
DIRECTOR OF EXPLORATION, COO**

gary@fiddleheadmining.com
905-299-8552



Canada

New Brunswick
C A N A D A

